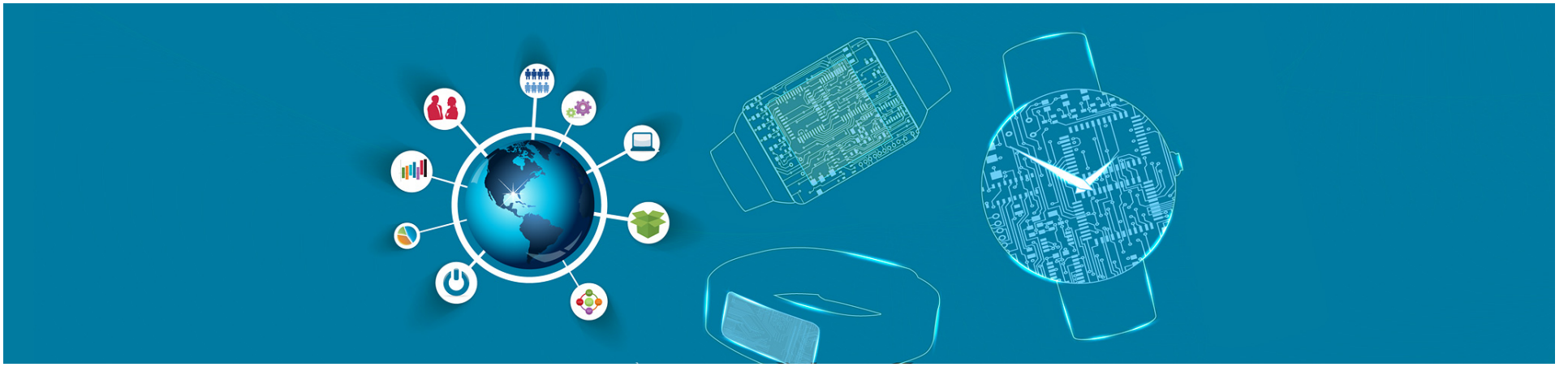



Wearable Band Go-To-Market Analysis



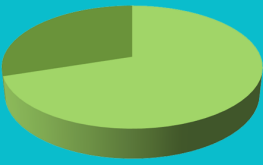
Canalys' Wearable Band Go-to-market analysis provides qualitative and quantitative insight into the market of wearable bands. For vendors and partners, this service serves as a guide to making the right decisions on value propositions, choosing the right channel partners and selling on the appropriate platform to engage in different markets worldwide.


Wearable Band Go-To-Market Analysis



59% of smartwatches cost more than US\$300 in 2016


By 2018, smartwatches will dominate the wearable band market with a 70% share






8% of wearables were cellular-enabled in 2016; this percentage will almost triple in 2017

CONTACT



DOWNLOAD BROCHURE



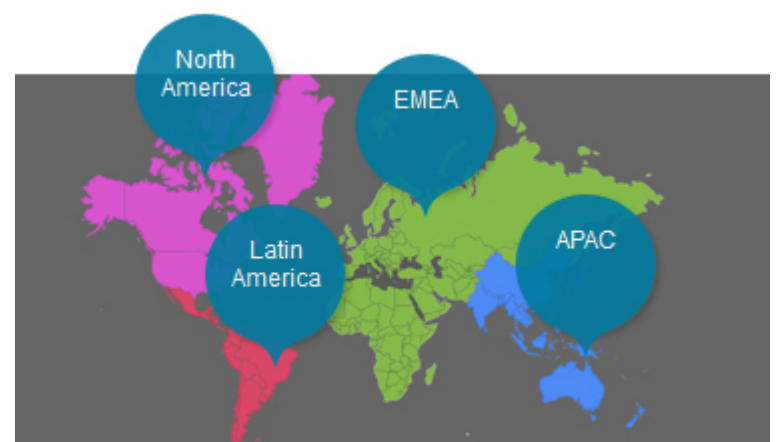
Content overview

Content

- Quarterly wearable band shipments and forecast data
- Regional and top market performance overview, including shipment data analysis and regional and top country trends
- Research reports

[Request full list of content](#)

Regions covered



Access and support

Unlimited inquiry



Direct access to analysts who respond to questions within the topic scope within 24 hours

Feature-rich tools, unlimited access



Individual access to client website, spreadsheets and published content

Trends analysis



Frequent data and analysis reports produced using a strict methodology and global definitions

Conclusions and advice



Insight and recommendations delivered via analytical reports and direct access to our experienced analyst team

Copyright © Canalys 2018. All rights reserved.

Americas: Suite 316, 855 El Camino Real, Palo Alto, CA 94301, US | tel: +1 650 681 4488
APAC: Room 310, Block A, No.98 Yanping Road, Jing An District, Shanghai, China, 200042 | tel: +86 21 2225 2888
APAC: 133 Cecil Street, Keck Seng Tower, #13-02/02A, Singapore, 069535 | tel: +65 6671 9399
EMEA: Diddenham Court, Lambwood Hill, Grazeley, Reading RG7 1JQ, UK | tel: +44 118 984 0520
e-mail: inquiry@canalys.com | web: www.canalys.com